

THE KRUGER TO CANYONS BIOSPHERE REGION

Biosphere Region Zonation Map



**KRUGER TO CANYONS
BIOSPHERE REGION**

LEGEND

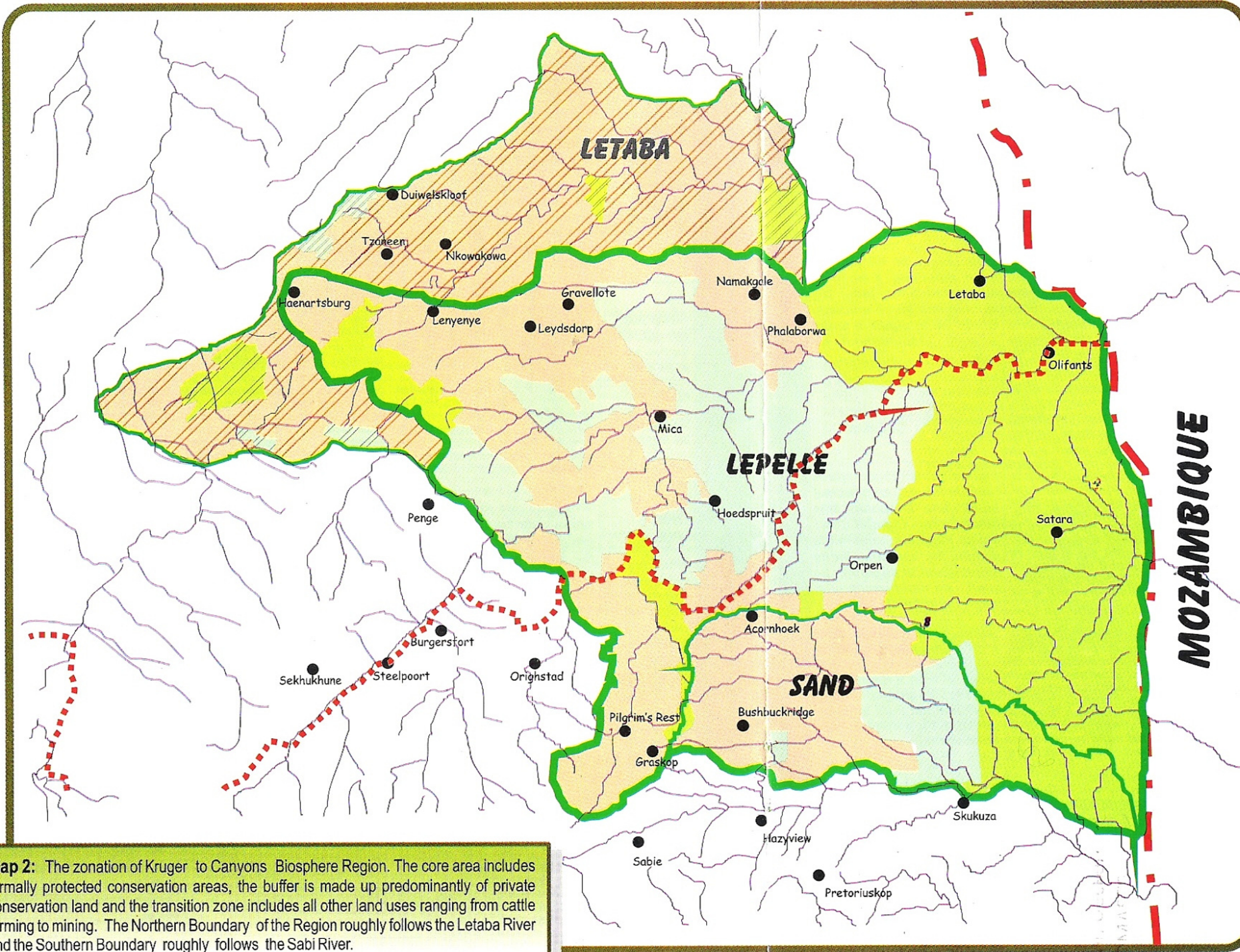
- Proposed Biosphere Boundary
- Compartmental boundaries
- International Border
- Provincial Border
- Rivers
- Core Areas
- Buffer Zone
- Transition Zones
- Areas not eligible for current registration



Initial Map preparation:
 - Prof Willem van der Riet &
 Craig Beech (GIS Business Solutions)
 August 2000

Final Map presentation:
 - Debby Thomson
 Hoedspruit
 January 2001

Update of Map:
 - Debby Thomson
 Hoedspruit
 March 2008



Map 2: The zonation of Kruger to Canyons Biosphere Region. The core area includes formally protected conservation areas, the buffer is made up predominantly of private conservation land and the transition zone includes all other land uses ranging from cattle farming to mining. The Northern Boundary of the Region roughly follows the Letaba River and the Southern Boundary roughly follows the Sabi River.